

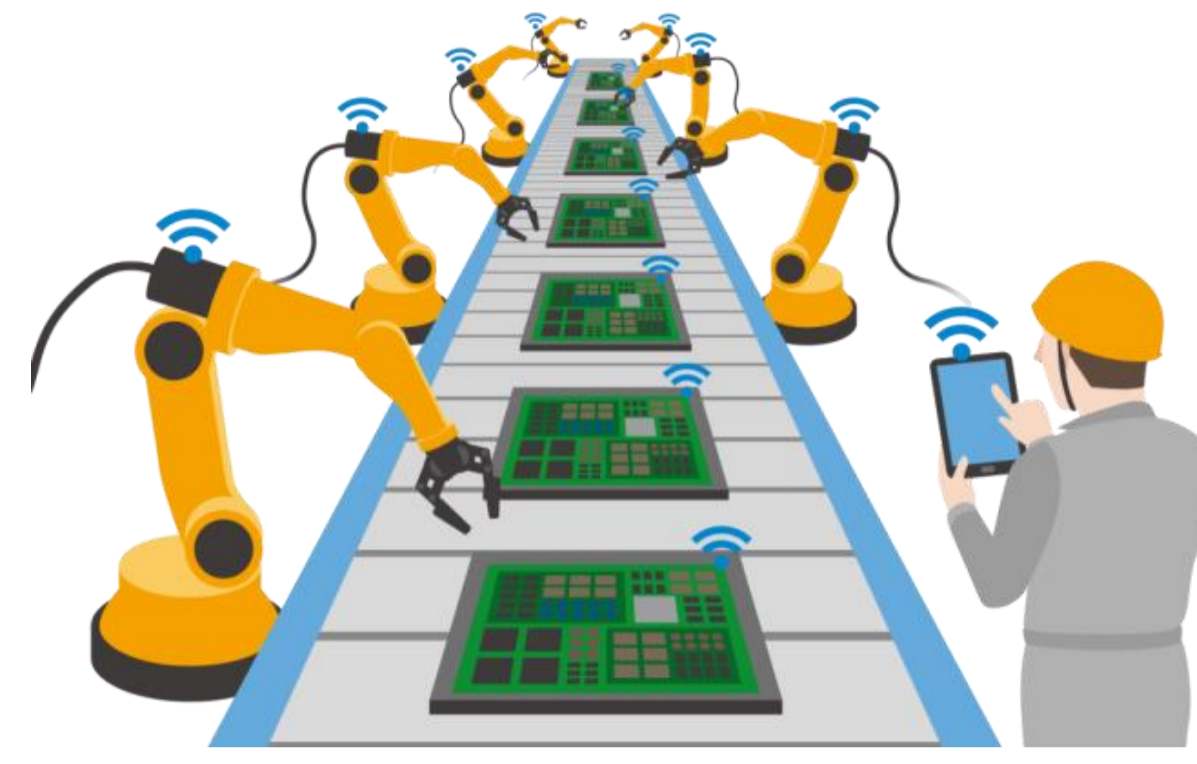
Model-based Process Failure Mode and Effects Analysis

Quality Assurance for Flexible Production Systems

Trends and Challenges for Flexible Production

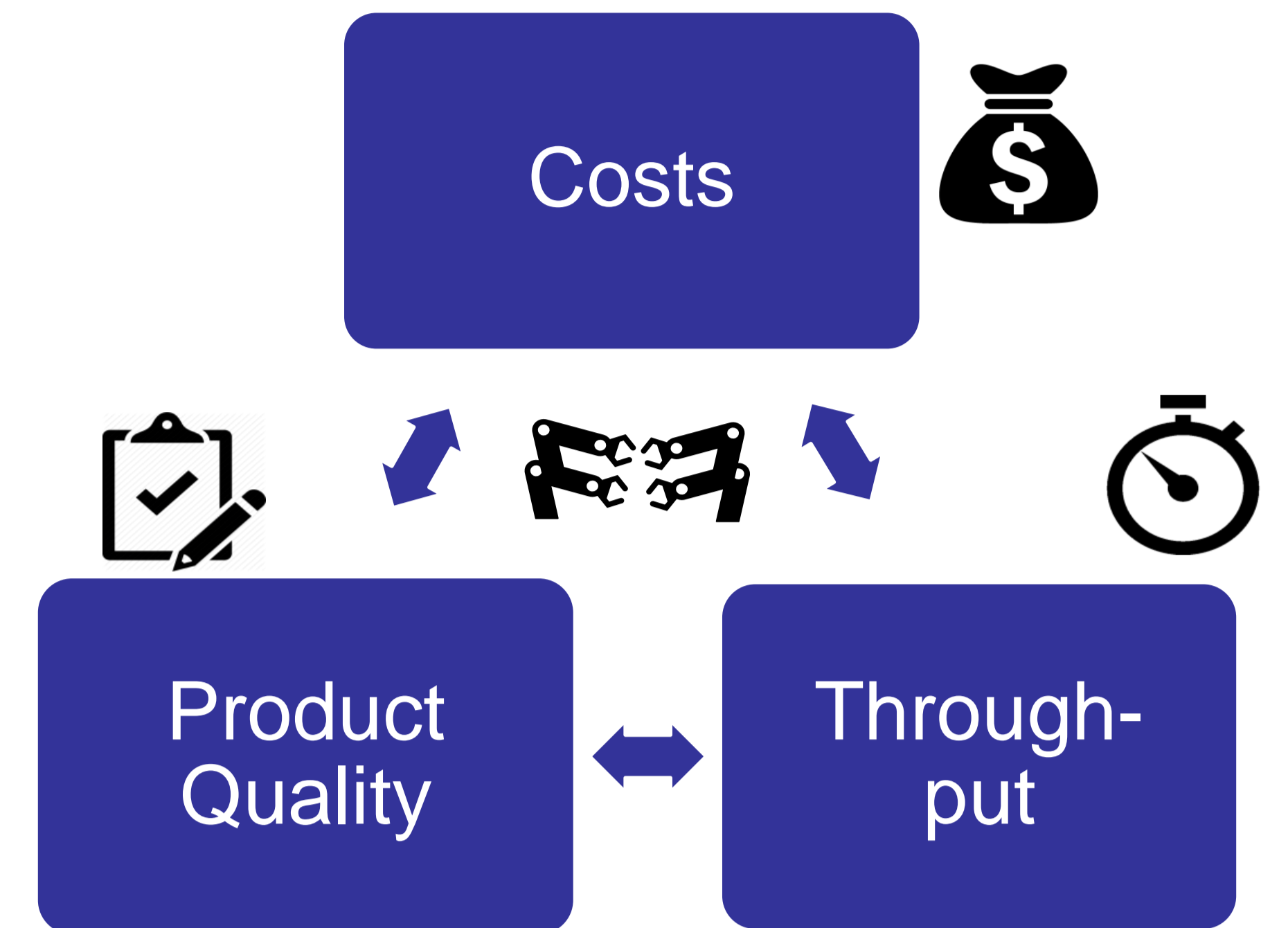
Envisioned e. g. by **Industrie 4.0**

- **Individualization** up to lot-size-1
- **Order-controlled** production at runtime
- **Dynamic integration** of machinery and skills
- **Reconfigurable** production systems



Challenges

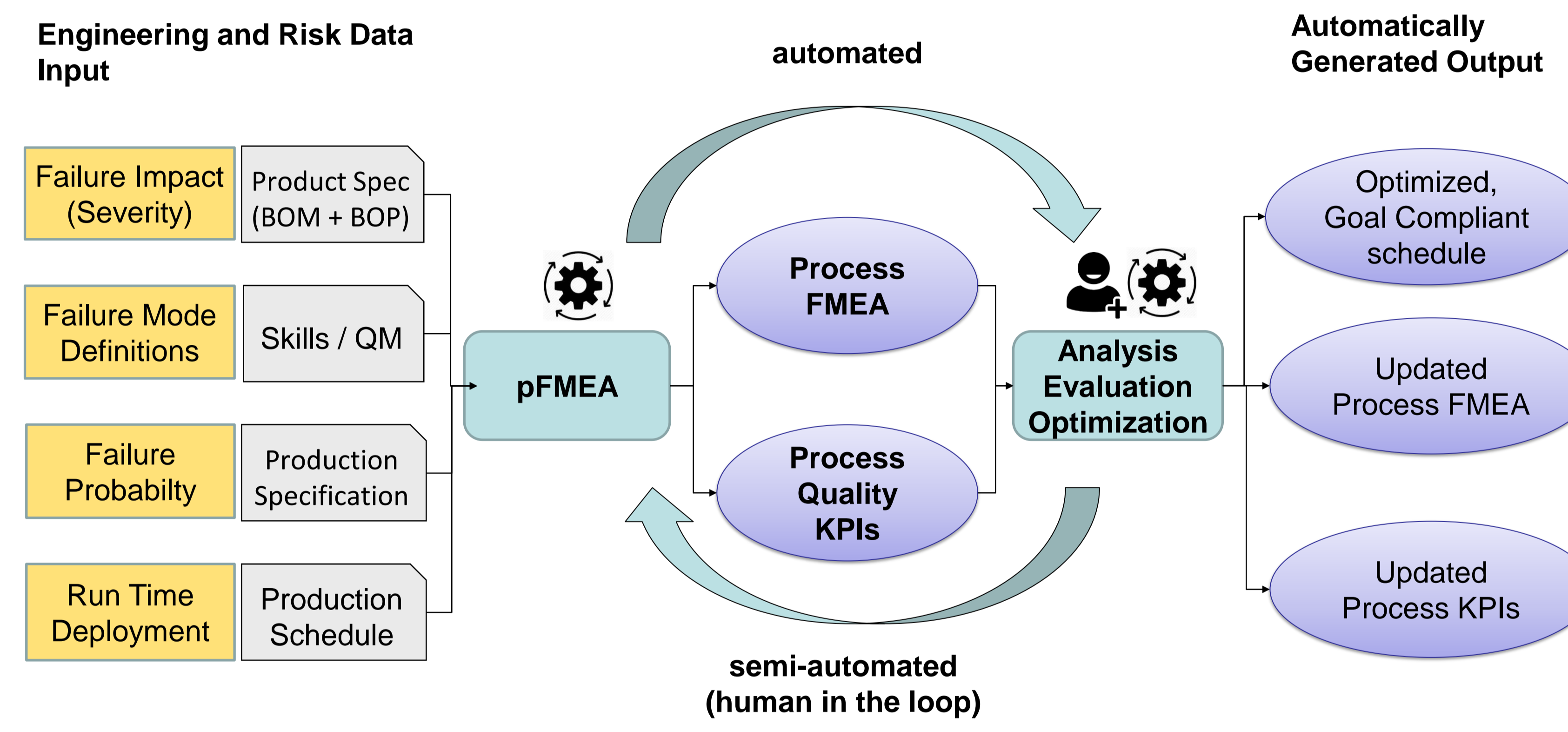
- **Ensure quality** for changing production schedules
- Process FMEAs need to be performed **rapidly and frequently**
- Find **optimal balance** regarding **quality, cost and production time**



Enable future production scenarios requires to ensure production quality efficiently

Model-based Process FMEA

Automatic Generation of Process FMEA Ensures Production Quality efficiently

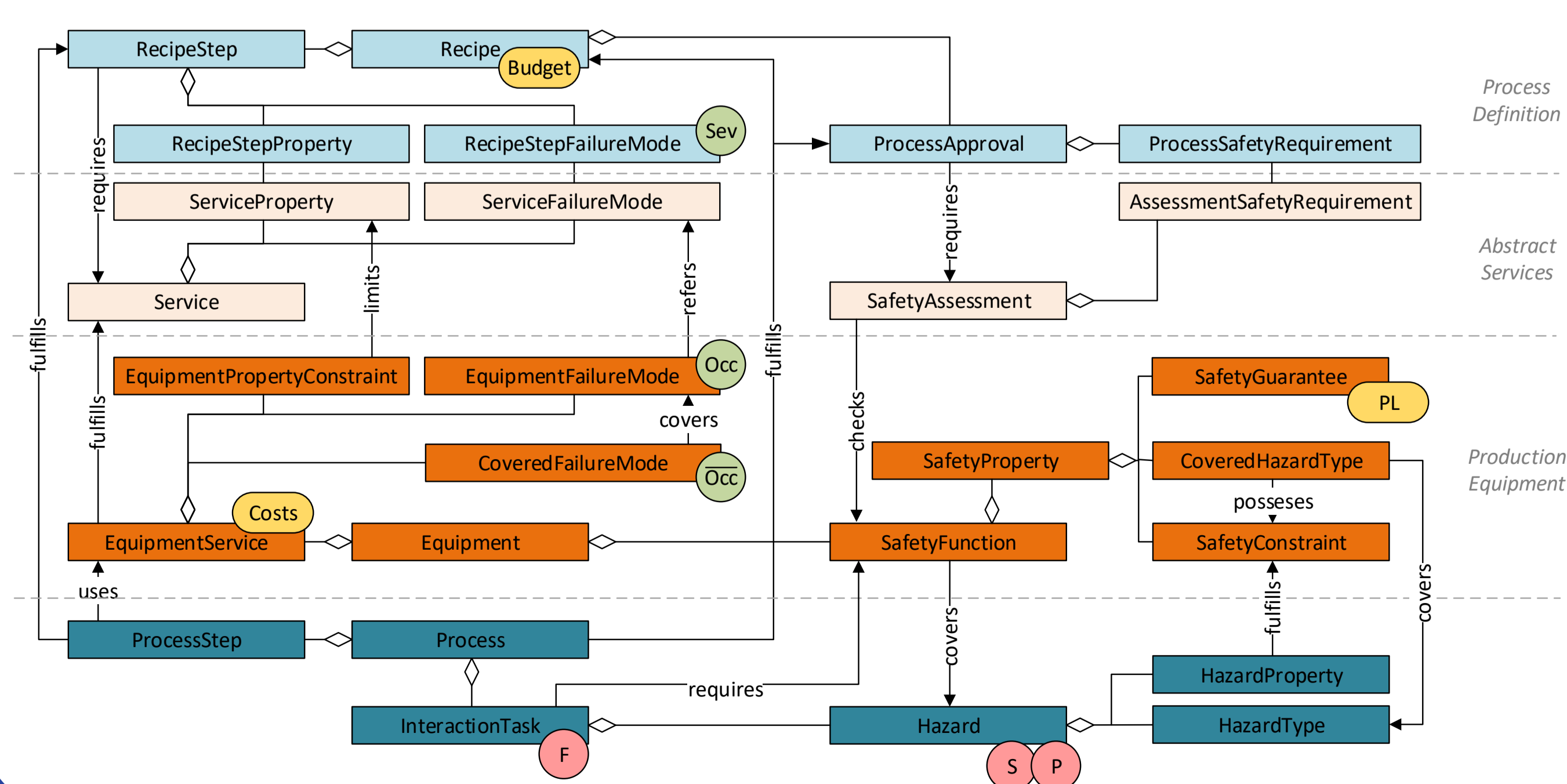


- **Model-based** and **modular** approach supports development process (agile, iterative and incremental development)
- **Decouple** independent **stakeholders** via defined interfaces
- **Reuse** existing **solutions** and **knowledge** from **risk analysis** for production services, product definition (BOM/BOP)
- **Automated** (re-) **generation** of artifacts
- **Semi-automatic** assistance for analysis, evaluation and optimization

Results

Meta Model for Safety and Quality

- **Decoupling** of stakeholders via defined interfaces
- **Information for automated risk assessment** with regard to safety and quality captured in one place



Method supported by Tooling

- Prototypical **implementation in MPS** to enable modeling by domain experts
- Integration in existing toolchains and production planning workflows is practicable

